



WEEKLY

10.14.2024

NEWSLETTER

FREE ONLINE CYBERSECURITY TRAINING

[Link to cybersecurity trainings](#)

PREPAREDNESS LUNCH AND LEARN

October 15, 2024

Topic this month: Enhanced Barrier Precautions and How to Create and IPC Risk Assessment and Annual IPC Plan

Who should attend:

EMS, Healthcare Coalitions, Hospitals, Long-Term Care, Local Emergency Management, Health Departments, Tribes, etc.

[Preparedness Lunch and Learn](#)

[Microsoft Teams Link](#)

NOONTIME NUGGET

October 22, 2024

[Microsoft Teams link](#)

-Coffee Break-

LISTEN WITH LINDS



LINDSAY IS CURRENTLY
LISTENING TO:

FEMA: BEFORE,
DURING, AND AFTER

EMRESOURCE REPORTING UPDATE

Effective **November 1, 2024**, CMS has updated the IPPS rules of participation to mandate the submission of Hospital Respiratory Data (HRD) to the National Healthcare Safety Network (NHSN). In preparation for this, as of October 9, the NHSN reporting site has been updated to accept the newly revised dataset, and it no longer accepts COVID-specific data.

All Michigan hospitals must continue submitting the current COVID dataset to EMResource until **October 15**.

Submissions must be completed by **1 PM** on that day. At **2 PM**, any legacy data elements reused in the new dataset will be renamed. Hospitals will receive guidance documents via email, which should be distributed as needed.

Starting October 16, hospitals should begin submitting the new dataset through EMResource. These submissions will continue to flow into NHSN, fulfilling the federal reporting requirements. To support this transition, **Open Office Hours** will be held on **October 16** via Teams from **10 AM to 12 PM**, with regular Hospital Office Hours from **2:30 to 3:30 PM** for further updates.



WEEKLY

10.14.2024

NEWSLETTER

FEMA UPDATES ITS NATIONAL DISASTER RECOVERY FRAMEWORK TO ENHANCE DISASTER

FEMA has updated the National Disaster Recovery Framework (NDRF) to streamline and clarify the federal government's approach for providing disaster recovery resources and support to disaster impacted communities. The NDRF explains the federal government's roles and responsibilities for organizing and deploying disaster recovery assistance. It also enhances effective collaboration among federal agencies and state, local, territorial governments and Tribal Nations, while informing nongovernmental partners.

The updates also incorporate feedback from Tribal Nations, territories, state and local partners, nonprofits and voluntary organizations. FEMA engaged business, industry and academic partners to gather lessons learned, best practices and other input to maximize the usefulness of the framework.

The 30-day public comment period is open Sept. 24, 2024, and written comments may be submitted through [fema.gov](https://www.fema.gov) through **Oct. 23, 2024**. Any remarks received during the comment period will be reviewed and considered for the final version of the framework.

[For More Information](#)

RURAL AND READY SYMPOSIUM

October 23 and 24, 2024

The Rural and Ready Symposium will be held at the Bay Mills Resort & Casino in Brimley, MI. This event aims to enhance the response capabilities First Responders, Medical Providers, and all others involved in emergency planning and response with a focus on rural communities.

[Registration and More Information](#)

EMERGENCY PREPAREDNESS FOR SKILLED NURSING FACILITIES WEBINAR SERIES: CMS PROVIDER TYPES

October 23rd, 2024 from 1-2pm

This webinar series will cover various aspects of emergency preparedness tailored specifically for Skilled Nursing Facilities (SNFs). Participants will gain valuable knowledge, including insights into regulatory requirements, risk assessments and planning, and training and exercising, to provide them with additional tools for safeguarding the well-being of residents and staff during emergencies.

Dates are:

- October 23, 2024
- January 22, 2025
- April 23, 2025
- July 23, 2025

[Register for Webinar Series](#)

WEBINAR - HANDLE WITH CARE: SPECIAL PATHOGENS WASTE MANAGEMENT

October 25th, 2024 from 1-2pm

Join NETEC for the upcoming webinar, "[Handle with Care: Special Pathogens Waste Management](#)," on Friday, October 25 at 1 p.m. EDT.

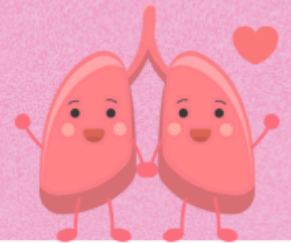
Waste management is a critical component of caring for patients potentially infected with special pathogens. This webinar will provide insights into properly classifying waste and practical approaches to developing and implementing comprehensive waste management plans.

Expert panelists will discuss the importance of building strong relationships with internal departments and external partners, including waste vendors, to ensure seamless and compliant waste handling. By the end of this session, participants will be better prepared to manage the complexities of special pathogens waste management, ensuring safety and regulatory compliance.

PEDIATRIC EDUCATION HOUR: PEDIATRIC RESPIRATORY ILLNESSES OCTOBER 29, 2024, 2 P.M. - 3 P.M.

*Registration is
OPEN!*

Presented by : Dr. Alysa Clark, M.D., Community E.D. Physician,
Michigan State University/ Helen Devos Children's Hospital



Dr. Alysa Clark will provide a talk on the pediatric airway and various pediatric respiratory illnesses such as bronchiolitis, croup, and pneumonia.

By the end of this session, students will be able to:

- ~ Utilize the pediatric assessment triangle
- ~ Know how to recognize and manage common pediatric respiratory illness
- ~ Know how to troubleshoot and manage pediatric airway

[Microsoft Teams link to Pediatric Education Hour](#)

Register on the eLicensing portal using Course ID: 24-ICE-11785

Approved CEs:

Pediatric Medical: 0.5 hour
Pediatric Airway: 0.5 hour
MFR, EMT, EMT-A, EMT-P



AHA: BE READY FOR OUR KIDS: PREPARING FOR EVERYDAY DISASTERS

October 31, 2024

[Link to register](#)

EMS EASTERN CONFERENCE

November 1 - 2, 2024

- Location: Lake Superior State University, Sault Ste. Marie, MI
- [NEW!! Link to register.](#)
- Times: Fri - 1200 to 1800 (6 available CEUs - 1 general topic and various breakouts),
 - Sat - 0900 to 1500 (6 CEUs, similar format + lunch)
- Cost: \$70 per day, or \$120 for full conference
- Local lodging partners are offering discounted room rates for the event.

VIRTUAL BASIC DISASTER LIFE SUPPORT COURSE

November 1, 2024 from 5-9pm

VIRTUAL NDLS INSTRUCTOR COURSE

November 22, 2024 from 9-1pm

Interested parties in either BDLS or NDLS courses can email Judy Wheeler at judy.wheeler@wmed.edu for the enrollment code. Course registration opens approximately 30 days prior to the course date.

PEDIATRIC EDUCATION & ADVOCACY KIT (PEAK)

Traumatic injuries are the primary cause of illness and death among children in the United States. Prompt and effective treatment of injured pediatric patients is crucial. Explore the new Pediatric Education and Advocacy Kit (PEAK) on multisystem trauma, designed to assist ED and EMS clinicians in identifying and managing children with multiple severe injuries. PEAK: Multisystem Trauma offers pediatric imaging guidelines, shock management and massive transfusion protocols, podcasts, simulation resources, and more.

[Pediatric Resources](#)

COVID TESTING

The Administration for Strategic Preparedness and Response (ASPR), an agency within the U.S. Department of Health and Human Services, in collaboration with the U.S. Postal Service has reopened [COVIDtests.gov](https://www.covidtests.gov), so that households across the country can order four additional over-the-counter COVID-19 tests for free. These tests are intended for use throughout the 2024 holiday season to detect currently circulating COVID-19 variants.

CYBERSECURITY: HEALTH SECTOR COUNCIL RESOURCES

Health Sector Council offers resources regarding cyber practices including monitoring threats, managing risks and respond and recover.

[For More Information](#)




BRUISING CLINICAL DECISION RULE FOR CHILDREN <4 YEARS OF AGE

If bruising in any of the three components (Regions, Infants, Patterns) is present without a reasonable explanation, strongly consider evaluating for child abuse and/or consulting with an expert in child abuse. TEN-4-FACESp is not to diagnose abuse but to function as a screening tool to improve the recognition of potentially abused children with bruising who require further evaluation.

Bruising Screening Tool

TEN-4-FACESp

Bruising Clinical Decision Rule for Children < 4 Years of Age

<p>TEN Torso Ears Neck</p>  <p>FACES Frenulum Angle of Jaw Cheeks (<i>fleshy part</i>) Eyelids Subconjunctivae</p>	<p>4 months and younger</p>  <p>Any bruise, anywhere</p>	<p>Patterned bruising</p>  <p>Bruises in specific patterns like slap, grab or loop marks</p>
REGIONS	INFANTS	PATTERNS

PEDIATRIC PANDEMIC NETWORK RESEARCH STUDY: PARTICIPANTS NEEDED

The Pediatric Pandemic Network (PPN) is conducting a study to improve pediatric surge planning and is seeking participation from community and critical access hospitals. Participants will complete a survey, engage in a Zoom interview, and join a collaborative focused on pediatric disaster readiness. An honorarium of \$550 will be provided for purchasing pediatric-specific supplies. The study, led by Dr. Jefferson Barrett and Dr. Sarita Chung, ensures confidentiality and voluntary participation, with more information available via the provided contact.

[Link to research study sign up](#)

Midwest EMSC Pre-Hospital Pediatric Symposium

October 29, 2024

Starts at 4 p.m. CT/ 5 p.m. ET



Register today for this *free & virtual* event!

4 EMS CE hours!

Topics Covered

- ♥ Human Trafficking
- ♥ Pediatric Triage & Disaster Readiness
- ♥ Out of Hospital Childbirth: Maternal Emergencies & Transport
- ♥ Pediatric Respiratory Emergencies



 **CLICK on the LOGO below or scan the QR Code to Register!**



MIDWEST EMSC



This annual pediatric education event brings passionate and experienced subject matter experts from across the country, right to you! Michigan EMS for Children (EMSC) collaborates with 12 other Midwestern EMSC programs in order to keep this opportunity free for all who attend, with EMS CEs offered!

Anna Brewer, former FBI special agent who created and managed two federal task forces addressing human trafficking, will be providing excellent training for us as the keynote speaker this year!

Registration is limited, please register now to reserve your spot if you are an EMS provider and available to attend on October 29 (starts at 5 p.m.).

[Registration](#)

PEDIATRIC: MEDICAL CE



Carter Kits and Autism Spectrum Disorder

November 8, 2024
10:00-12:00pm

The Carter Kits contain items to comfort and address the security needs for children or adults on the Autism Spectrum. First responders may find themselves caring for an individual with Autism who may be overwhelmed or impacted by traumatic events. This class will help prepare responders when encountering these challenging situations.

Blair Township Emergency Services Classroom 1702 S M37, Traverse City, MI 49685 Sign up on the MDHHS MI-EMSIS website Emurphy@Blairtownshipmi.gov



STATE BURN COORDINATING CENTER BURN SURGE FACILITY TRAINING

November 12, 2024

There are still spaces available for the November's BSF/ABLS training course. Please email the completed attached form to [Sarah Parviz](#) if you would like to be registered.

[Registration Form](#)

ICS 400 COURSE: BUREAU OF EMERGENCY PREPAREDNESS, EMS AND SYSTEMS OF CARE

January 22 & 23rd, 2025

[Registration is through MI-TRAIN.](#)

Registration Deadline: January 7, 2025

Deadline for Prerequisites Uploaded to MI-TRAIN: January 14, 2025

Prerequisites:

- [ICS-100 \(Course ID 1078825\)](#)
- [ICS-200 \(Course ID 1084004\)](#)
- [ICS-300 \(Course ID 1029037\)](#)
- [IS-700 \(Course ID 1078831\)](#)
- [IS-800 \(Course ID 1091330\)](#)

Please [watch the video](#) of how to upload FEMA prerequisite certificates to your MI-TRAIN account.

EMS PROTOCOL EDUCATION

MDHHS has partnered with Western Michigan University's Homer Stryker School of Medicine for an online training module related to the new protocols at no cost. CE is available for all levels.

[Click here to register](#)

CMS PROVIDER TYPES

REMINDER: INTERIM GUIDANCE FOR MANAGING HEALTHCARE PERSONNEL WITH SARS-COV-2 OR EXPOSURE TO SARS-COV-2

With respiratory disease season drawing near, please re-familiarize yourselves with this guidance from the CDC. This interim guidance is intended to assist with the following:

1. Determining the duration of restriction from the workplace for HCP with SARS-CoV-2 infection.
2. Assessment of risk and application of workplace restrictions for asymptomatic HCP with exposure to SARS-CoV-2.

[Interim Guidance](#)

MICHIGAN DIALYSIS COMMUNITY JOINT TRAINING SESSION

To Be Determined

This virtual collaborative meeting will bring together the Kidney Community Emergency Response (KCER) Program, End Stage Renal Disease (ESRD) Network, and the state-level Emergency Management/ESF-8 agency or Leading Healthcare Coalition (adding a few of our Healthcare Coalition Contacts as well). Each participant will have the opportunity to share valuable information and resources with dialysis providers in your territory.

The KCER team will facilitate the preparation of all meeting materials and extend invitations to all in-state dialysis providers. To streamline the scheduling process, please utilize the Doodle scheduling tool linked below to select a date and time that aligns with the availability of your state Emergency Management/ESF-8 and/or HCC. Please choose any date/time available for November.

The virtual session would be slated to last 75 minutes, with the following agenda:

- 20 minutes: KCER Program overview
- 20 minutes: ESRD Network overview
- Optional 20 minutes: Your agency sharing information/resources with dialysis providers (if desired)
- Remaining 15 minutes: Q&A session

This event welcomes participation from all dialysis facilities and professionals in the fields of emergency management, public health (ESF-8), healthcare coalitions, and additional federal, state, and local stakeholders involved in disaster response and recovery.

[Scheduling](#)

[Previous Session-New York](#)

[Previous Session-Rhode Island](#)

[Previous Session- New Hampshire](#)



CONTACT US!
REGION 7 HEALTHCARE COALITION
80 LIVINGSTON BLVD, STE. 106
GAYLORD, MI 49735

**24/7 REGIONAL MEDICAL COORDINATION
CENTER**

ACTIVATION LINE: 855-734-6622

AMANDA : 989-370-5013

LINDSAY: 989-370-3583

FOLLOW US ON FACEBOOK!
FOLLOW US ON LINKEDIN!
FOLLOW US ON INSTAGRAM!
FOLLOW US ON TWITTER!